

LAN Components

10BASE-T

Pulse Transformers

TLA-3T106/107/111

TLA-3T106/107

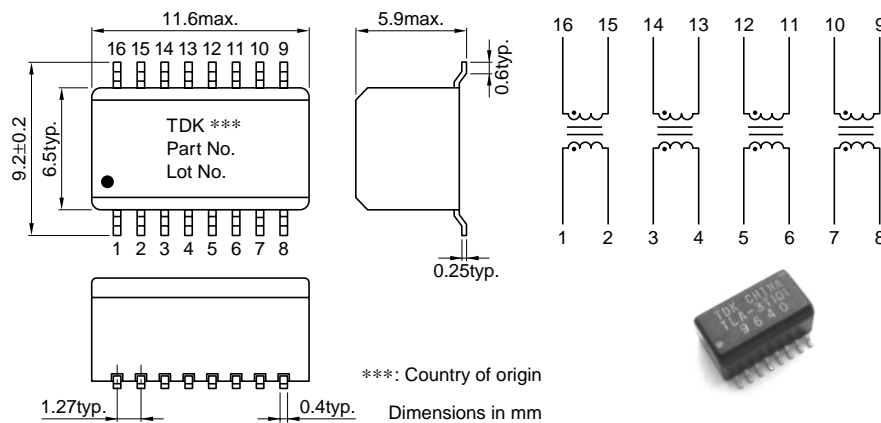
FEATURES

- 16-pin SOP package(1.27mm=50mil pin pitch).
- AC.2000V withstanding voltage.
- Using the high-quality and wide-band ferrite cores for LAN.
- TLA-3T106/107 are suitable for use with LEVEL ONE's LXT914, 915, 944(LEVEL ONE recommends).
- TLA-3T106 is suitable for use with AMD's Am79C984A, 985, 988A.
- Tape and reel packaging are available(TLA-3T10□-T: Tape and reel, TLA-3T10 □: Bulk).
- ISO9001/QS9000 quality standards certification.

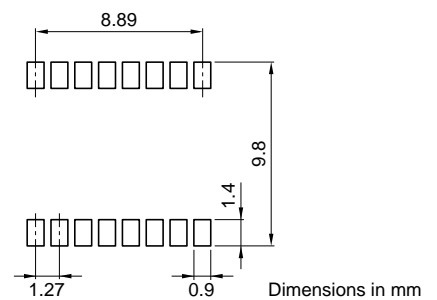
GENERAL SPECIFICATIONS

Pulse transformer	4
Port	4
Operating temperature range	0 to +70°C
Storage temperature range	-40 to +85°C
Withstanding voltage	Erms:2000V[60s]

SHAPES AND DIMENSIONS/CIRCUIT DIAGRAM



RECOMMENDED PC BOARD PATTERN



ELECTRICAL CHARACTERISTICS

Part No.	Turns ratio	Inductance (μ H)min.[100kHz]	Leakage inductance (μ H)max.[100kHz]	Inter-winding stray capacitance (pF)max.[100kHz]	DC resistance (Ω)max.
	1,2:16,15	1-2	1-2[16-15 shorted]	1-2-16,15	1-2, 16-15
	3,4:14,13	3-4	3-4[14-13 shorted]	3,4-14,13	3-4, 14-13
	5,6:12,11	5-6	5-6[12-11 shorted]	5,6-12,11	5-6, 12-11
	7,8:10,9	7-8	7-8[10-9 shorted]	7,8-10,9	7-8, 10-9
TLA-3T106(-T)	1:1	130	0.3	12	0.4, 0.4
TLA-3T107(-T)	1:1.41	130	0.3	12	0.4, 0.5

- $T_a=25^\circ\text{C}$

LAN Components

10BASE-T

Pulse Transformers

TLA-3T106/107/111

TLA-3T111

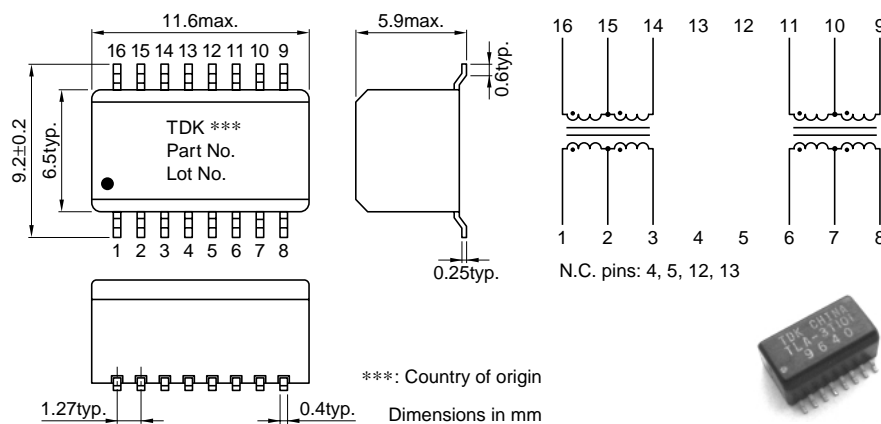
FEATURES

- 16-pin SOP package (1.27mm=50mil pin pitch).
- AC.2000V withstanding voltage.
- Using the high-quality and wide-band ferrite cores for LAN.
- Tape and reel packaging are available (TLA-3T111-T: Tape and reel, TLA-3T111: Bulk).
- ISO9001/QS9000 quality standards certification.

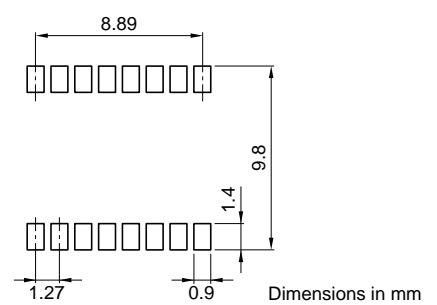
GENERAL SPECIFICATIONS

Pulse transformer	2
Port	1
Operating temperature range	0 to +70°C
Storage temperature range	-40 to +85°C
Withstanding voltage	Erms:2000V[60s]

SHAPES AND DIMENSIONS/CIRCUIT DIAGRAM



RECOMMENDED PC BOARD PATTERN



ELECTRICAL CHARACTERISTICS

Part No.	Turns ratio	Inductance (μ H)min.[100kHz]	Leakage inductance (μ H)max.[100kHz]	Inter-winding stray capacitance (pF)max.[100kHz]	DC resistance (Ω)max.
	1,2,3:16,15,14 6,7,8:11,10,9	1-3 6-8	1-3[16-14 shorted] 6-8[11-9 shorted]	1,3-16,14 6,8-11,9	1-3 6-8
TLA-3T111(-T)	1CT:1CT 1CT:1.41CT	130 130	0.3 0.3	12 12	0.5 0.5

- $T_a=25^\circ\text{C}$

LAN Components

10BASE-T

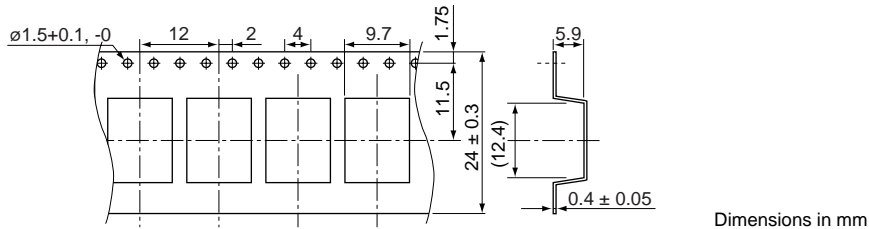
Pulse Transformers

TLA-3T106/107/111

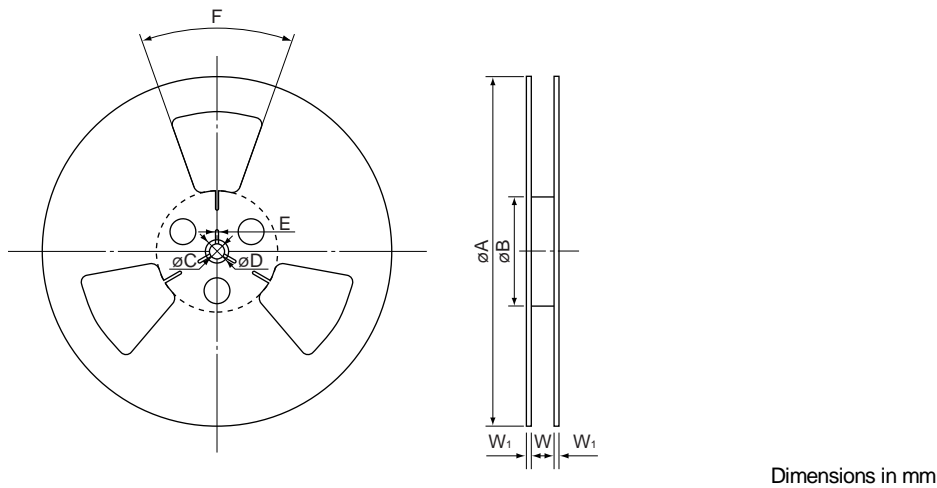
PACKAGING STYLES

Quantity : 1000pieces/reel

TAPE DIMENSIONS



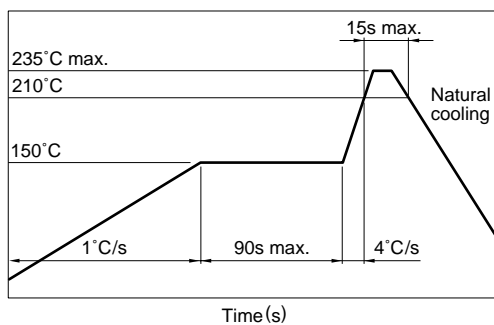
REEL DIMENSIONS



A	B	C	D	E	F	W	W ₁
∅330±2	∅80±1	∅13.5±0.2	∅21±0.8	2±0.5	3-40°	24.4+2, -0	2±0.5

RECOMMENDED SOLDERING CONDITION

REFLOW SOLDERING



- Temperature is measured on the top of products body(Using thermocoupler for measurement).
- This profile is reference data we recommend. Please check in your actual process.